



DT Series

DUAL-MPPT Three-Phase

10kW/12kW/15kW/17kW/20kW

Case Study: GoodWe three-phase inverters in commercial projects



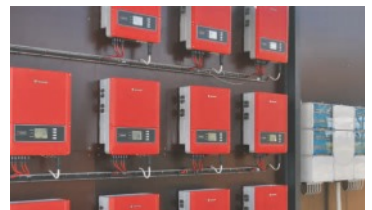
Location: Rooftop of Canadian Solar's factory
Capacity: 1.2 MW
Inverter: 53 x GW17K-DT, 20 x GW15K-DT



Location: Rooftop of Panasonic factory
Capacity: 430 KW
Inverter: 14 x GW17K-DT, 12 x GW15K-DT



Location: Industrial park in Suzhou, China
Capacity: 967 KW
Inverter: 32 x GW17K-DT, 15 x GW15K-DT



Location: UK National Coal Mining Museum
Capacity: 51kW
Inverter: 3 x GW17K-DT



Location: Solar Farm, Gloucester, UK
Capacity: 58kW
Inverter: 4 x GW17K-DT



Location: Solar Farm, Denmark
Capacity: 200kW
Inverter: 11 x GW17K-DT

WHERE THE SUN SHINES, THERE IS GOODWE.

Technical Data

GW10K-DT

GW12K-DT

GW15K-DT

GW17K-DT

GW20K-DT

DC Input Data					
Max. DC power [W]	10200	12300	15400	17500	20500
Max. DC voltage [V]	1000	1000	1000	1000	1000
MPPT voltage range [V]	260~850	260~850	260~850	260~850	260~850
Starting voltage [V]	250	250	250	250	250
Max. DC current [A]	22/11	22/11	22/22	22/22	22/22
No. of DC connectors	4	4	6	6	6
No. of MPPTs	2	2	2 (can parrallel)	2 (can parrallel)	2 (can parrallel)
DC connector	SUNCLIX / MC4 (optional)				
AC Output Data					
Norminal AC power [W]	10000	12000	15000	17000	20000
Max. AC power [W]	10000	12000	15000	17000	20000
Max. AC current [A]	17	19	25	25	30
Norminal AC output	50/60Hz; 400Vac				
AC output range	45~55Hz/55~65Hz; 310~480Vac				
THDi	<1.5%				
Power factor	0.9 leading~0.9 lagging				
Grid connection	3W/N/PE				
Efficiency					
Max. efficiency	98.0%	98.0%	98.2%	98.2%	98.2%
Euro efficiency	>97.5%	>97.5%	>97.5%	>97.5%	>97.5%
MPPT adaptation efficiency	>99.5%	>99.5%	>99.5%	>99.5%	>99.5%
Protection					
Residual current monitoring unit	Integrated	Integrated	Integrated	Integrated	Integrated
Anti-islanding protection	Integrated	Integrated	Integrated	Integrated	Integrated
DC switch	Integrated (optional)	Integrated (optional)	Integrated (optional)	Integrated (optional)	Integrated (optional)
AC over current protection	Integrated	Integrated	Integrated	Integrated	Integrated
Insulation monitoring	Integrated	Integrated	Integrated	Integrated	Integrated
Certifications&Standards					
Grid regulation	VDE-AR-N 4105, G59/3 AS4777.2&.3, IEC62109-2 VDE0126-1-1+A1 EN50438, RD1699 MEA, PEA, NRS097-2-1	VDE-AR-N 4105, G59/3 AS4777.2&.3, IEC62109-2 VDE0126-1-1+A1, RD1699 EN50438, NRS097-2-1	VDE-AR-N 4105, G59/3 AS4777.2&.3, IEC62109-2 VDE0126-1-1+A1, RD1699 EN50438, NRS097-2-1	VDE-AR-N 4105, G59/3 AS4777.2&.3, IEC62109-2 VDE0126-1-1+A1, RD1699 EN50438, NRS097-2-1	AS4777.2&.3, G59/3, IEC62109-2 VDE0126-1-1+A1 EN50438, RD1699 MEA, PEA, NRS097-2-1
Safety	IEC62109-1&-2, AS3100				
EMC	EN 61000-6-1,EN 61000-6-2,EN 61000-6-3,EN 61000-6-4, EN 61000-3-11, EN 61000-3-12				
General Data					
Dimensions (WxHxD)	516*650*203mm				
Weight [kg]	39				
Mounting	Wall bracket				
Ambient temperature range	-25~60°C (>45°C derating)				
Relative humidity	0~95%				
Max. operating altitude	2000m				
Protection degree	IP65				
Topology	Transformerless				
Night power consumption [W]	<1				
Cooling	Fan cooling				
Noise emission [dB]	<45				
Display	5.0" LCD				
Communication	USB2.0; RS485 or WiFi				
Standard warranty [years]	7/10/15/20/25 (optional)				

- Maximum Efficiency up to 98.2%
- European Efficiency up to 97.5%
- MPPT Efficiency over 99.5%
- DC switch
- IP65 dust-proof and water-proof rating
- 45°C full-load output
- Super large 5-inch LCD
- 30% lighter than similar products
- Multiple monitoring and communication
- up to 800 pieces can be integrated in one system

GoodWe Contacts

GoodWe UK Branch
93 Caversham Place
Sutton Coldfield B73 6HW

uk@goodwe.com.cn
www.goodwe.com.cn

GoodWe UK Warehouse
Harfreys Ind Est
Harfreys Road
Great Yarmouth
NR31 0LS

GoodWe (China Headquarter)
No.189 Kunlunshan Rd., SND,
Suzhou, 215163, China
T: +86 512 6239 6771
sales@goodwe.com.cn
www.goodwe.com.cn